

PAPUA NEW GUINEA CALLING

Official Journal of Papuan Philatelic Society

* The font used in the banner is inspired by the corporate letterhead used by Burns Philp & Company Limited, a trading and shipping company whose history is intimately intertwined with PNG and the wider Pacific region.

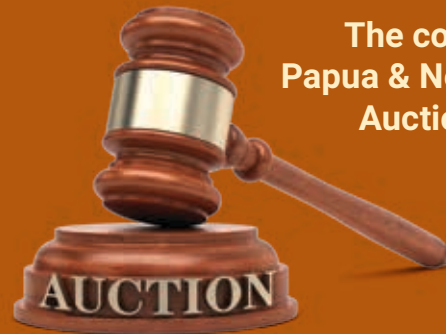
FEATURED IN THIS ISSUE



Chairman's Report
by Mark Robinson

*Symbol of the Chair:
The Sepik Haus Tambaran
Orator's Stool*

PAGE **2**



**The collection of
Papua & New Guinea
Auction (Part 2)**

PAGE **3**



Sir Robert Bear
by Alan Grey

PAGE **4**



**Found: A Hoard Of New Guinea
Stamps Part 3**
by Phillip Blakeney

PAGE **6**

**MELBOURNE PPS
STUDY GROUP** PAGE **7**

**MODERN
MATTERS**
by Roy Materne PAGE **8**



**The Reverend
Gentleman
of New Guinea**
by Tony Griffin

PAGE **9**



**AGM and General Meeting
Summary**

PAGE **11**

PNGC Special Notices

**Papuan Philatelic Society
Officers and contacts** PAGE **2**

**PPS Membership
invitation** PAGE **2**

PAPUAN PHILATELIC SOCIETY OFFICERS

Chairman:

Mark Robinson – Australia
robbo_robinson60@hotmail.com

Vice Chairmen:

Tony Griffin – Australia

Roger Lee – UK

Frank J. Wilson – UK
f.j.wilson@btinternet.com

Richard Muller – Australia
richard@muller.id.au

Hon. Secretary:

Ted McPheat – Australia

Honorary Treasurers:

Lorraine Fitzwater – UK
lorraine@highexpert.com

Maurice Clark – Australia

Advertising & Promotion:

Mark Robinson – Australia
robbo_robinson60@hotmail.com

Editor:

Richard Muller – Australia

Assistant Editor:

Jeff Marks – Australia

Australian Contact:

Maurice Clark
margck5@bigpond.net.au

PPS Auctioneer:

Frank J. Wilson – UK
ppsauktion@btinternet.com

Advertising & Promotion

Mark Robinson
robbo_robinson60@hotmail.com

Life Members:

Max Bulley
Roger Lee
Roy Materne
W. Sondheim
Michael Garwood
(dec)

Chairman's Report

Dear PPS members,

I am pleased to say that the AGM and National meeting took place on the 12th May at the Pacific Resort Cleveland in Brisbane and was a great success and well attended.

I would like to personally thank Mr Gary Watson from Abacus Auctions for attending, and also sponsoring the dinner for the evening, along with PPS member Mr Greg Melick who supplied the wine from his own winery (Pressing Matters) in Richmond, Tasmania which went down very well with all that attended.

It was pleasing to see the amount of work that the committee members had prepared come to fruition for the AGM section of the day. My many thanks to Ted McPheat, Maurice Clark and Lorraine Fitzwater for the time involved in their detailed presentations.

The speakers on the day were of the highest quality and special thanks to all those who took the time to present such a great array of topics as follows.

Mr Jerry Blair: The advantages, pitfalls & value of Authenticity Certificates

Mr Murray Collins: The fascinating GRI Overprinted German issues

Mrs Joan Orr: A wonderful insight into the world of exhibiting: the development; the categories & levels; the benefits; and hints for presentation.

Mr Gary Watson: The future of Auction Houses and how best to make your choice. The advantages; the pitfalls; and Abacus.

Mr Richard Muller: PPS Website and Magazine updates

Vice Chairman and Auctioneer Mr Frank Wilson has put together the second part of the 3-part auction as discussed in our last issue. We are hoping for as much support as we received for the first one.

Please remember that the auctions are reserved for paid up members only. Membership fees are due in May each year so if you have not yet renewed your membership for 2018-2019, you will not be able to bid in the impressive auction number 2.

Cheers! Mark (Robbo) Robinson

PPS Chairman (Australia)



Chairman's symbol:
A 1930s Sepik
Orator's Stool (Teket)*.
Museum of Victoria

PAPUAN PHILATELIC SOCIETY MEMBERSHIP

Papuan Philatelic Society (PPS) membership is open to anyone who collects or has an interest in the stamps and postal history of 'Papua New Guinea'. The PPS covers all periods from the early days of British New Guinea (later Papua) and German New Guinea in the 1880's, to modern PNG with its many colourful stamps and cards.

The membership is international with links in Australia, USA, UK & Europe, New Zealand and PNG itself. It is one of the strongest and most active philatelic societies.

For information about joining the PPS, please contact us at papuanphilatelicsociety@gmail.com

PAPUAN PHILATELIC SOCIETY

THE COLLECTION OF PAPUA & NEW GUINEA (Part 2)

**CLOSING DATE
JULY 31 2018**



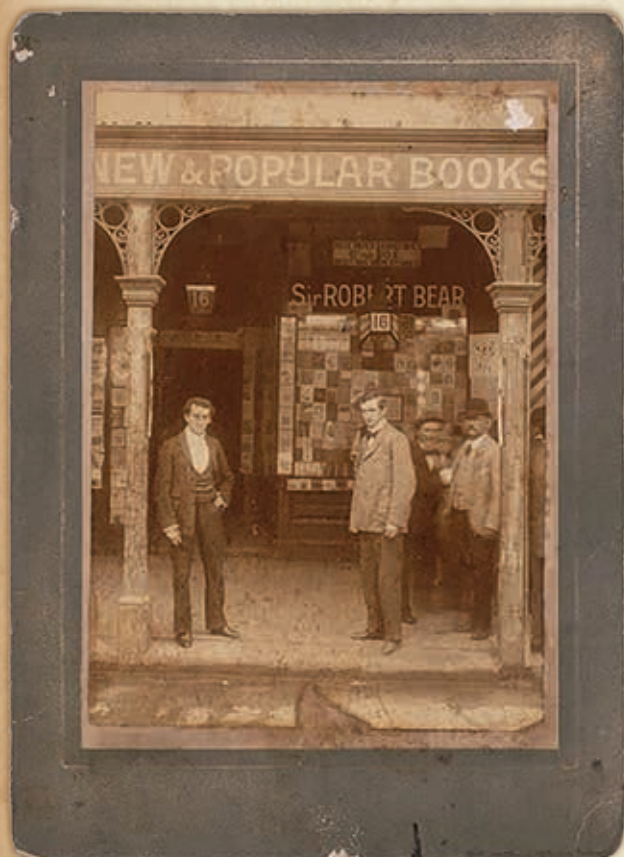
Kindly offered for sale to the members of the PPS by
the Executors of Mr. & Mrs. G. Kemp (deceased)
View at <http://www.mailbyrail.com/ppsauction2/>



Auctioneer: Frank J Wilson, 57A Bourne Road, Spalding, Lincs. PE11 1JR. U.K.
email address: ppsauction@btinternet.com.

SIR ROBERT BEAR

□ By Alan Grey (Australia) □



Sir Robert Bear ran an “alternate” Publishing and Importing bookshop at 16 Park Street, Sydney, which specialized in pornographic material. It was also controversial, as it had been claimed he sold contraceptive devices, but this could not be confirmed. The rise of this radical bookshop was synonymous of the rise in radicalism at the time, and his Free Thought Book Depot was the only commercial outlet for such literature.

An image of his bookshop is in the National Library Archives and is illustrated. It is thought Sir Robert Bear is one of the gentlemen in the photograph.

It was probable also that Sir Robert Bear bestowed his knighthood upon himself, as nowhere in the records is such a knighthood recorded.

Eight covers in the early years have so far been recorded to “Sir Robert Bear”, six from British New Guinea during the years 1901 to 1903, one in 1907 after the name change to Papua and one from Nauru in 1910. Others may well exist from this period and some covers with typed addresses to the Royal Arcade in Sydney in the late 1930s and early 1940s are known. Images are courtesy of the author and Prestige Philately (now Abacus Auctions).



Cover No. 1

WOODLARKS / BNG / 8 SP (01)
postmark without year slug (Lee type 59 Rated F)
10 Bar BNG obliterator cancelling stamp
Transit mark SAMARAI / BRITISH NEW GUINEA /
14 SP 1901
Receiving mark SYDNEY 27 SP 01



Cover No. 2*

TAMATA / BNG / 26 FE 02 postmark
(Lee type 48 Rated F)
SAMARAI / BRITISH NEW GUINEA / 12 MR 1902
Rare REGISTERED / TAMATA BNG
(Lee type 50 Rated G)
Transit mark REGISTERED SYDNEY 24 MR 02
MAMBARE BRITISH NEW GUINEA
(Red wax seal on reverse)



Cover No. 3*

WOODLARCS / BNG / 4 FE (03) postmark without year slug (Lee type 59 Rated F)
 10 Bar BNG obliterator cancelling stamps
 Transit marks SAMARAI / BRITISH NEW GUINEA / 8 FE 1903 and COOKTOWN 12 FE 03 QUEENSLAND
 Receiving mark SYDNEY 20 FE 1903



Cover No. 4*

SAMARAI / BRITISH NEW GUINEA / 24 AP 1903 postmark
 REGISTERED / SAMARAI BNG (Lee type 26 Rated D)
 Transit mark COOKTOWN QUEENSLAND 30 AP 03



Cover No. 5

WOODLARCS / BNG / 6 MAY 1903 postmark with separate date handstamp (Lee type 59 Rated F)
 REGISTERED / WOODLARCS BNG (Lee type 61 Rated D)
 10 bar BNG Woodlarks obliterator cancelling stamps
 Transit marks of SAMARAI / BRITISH NEW GUINEA, COOKTOWN / QUEENSLAND and SYDNEY, but reverse of cover not seen.



Cover No. 6

WOODLARCS / BNG / 6 MAY 1903 postmark with separate date handstamp (Lee type 59 Rated F)
 10 bar BNG Woodlarks obliterator cancelling stamps
 Receiving mark likely to be SYDNEY 1903



Cover No. 7

REGISTERED / SAMARAI BNG (Lee type 26 Rated D)
 SAMARAI E.D / PAPUA / 19 SEP 07 postmark (Lee type 31 Rated A)
 Receiving mark SYDNEY 3 OCT 07



Cover No. 8

Marshall-Inseln postmarks cancelling stamps
 Nauru (Marshall-Inseln) Registration Label
 Receiving mark REGISTERED SYDNEY 31 MY 10
 Sender: Rev. Philip Adam Delaporte, a missionary featured on Nauru stamps (Hopefully the Reverend was not expecting a brown paper parcel by return mail)

FOUND: A HOARD OF NEW GUINEA STAMPS

Untouched for 90 years (Part 3)

■ By Phillip Blakeney – Australia ■

Note to readers: Figure numbers continue in sequence from Part 2

RABAU and KOKOPO

Set around picturesque Blanch Bay in New Britain in the caldera of volatile Mts Tavavur and Vulcan, Rabaul became the main centre in the Mandated Territory of New Guinea. Originally the German seat of Government was at Herbertshohe (Kokopo) but this was shifted to Simpsonhafen later renamed Rabaul in 1910 and the postal agency was made a full Post Office.

Rabaul grew much bigger until the 1992 volcanic eruption destroyed most of the town under an ash shower, and at this point Kokopo became the main settlement to the present day.



Figure 11
RABAU
Type 58 Rating "B"



Figure 12
KOKOPO
Type 15 Rating "C"

A listing of each of the 21 Types in the hoard follows.
The rare items have been reviewed by Andrew Loughran.

Type 15 KOKOPO

ERD- 12/1/23 LRD- 25/10/26 Scarcity Rating "C"

This postmark is notable for having a "crumbled inner circle" flaw which developed sometime early in 1925. Powell / Loughran indicates that this postmark was "seen only on NWPI issues, generally struck in violet until a commercial cover bearing a 2d Huts stamp cancelled with the CDS appeared at auction in the year 2000 (acquired by the editor)". The hoard is an important discovery here, as there are over 30 strikes on New Guinea Huts stamps. A separate article on the crumbled inner circle is under preparation.



Figure 17



Figure 18

Type 16 KOKOPO

ERD- 9/2/25 LRD- 3/12/35
Scarcity Rating "D"

This postmark came into use in 1925 and was then used concurrently with Type 15. It is shown on the map.

Type 23 MADANG

ERD- 10/2/21 LRD- 25/7/39 Scarcity Rating "A"

Madang was for a time the headquarters of the New Guinea Company. Once dubbed the prettiest town in the Pacific" it was severely damaged in WWII. This common postmark is illustrated on the map spread.

Type 31 DISTRICT OFFICE EITAPE

ERD- 27/12/23 LRD- 2/1/25 Scarcity Rating "F"

Eitape (Aitape) is a very remote outpost on the north coast of New Guinea. Even now the beautiful scenic road trip from Wewak requires fording 39 streams in the dry season, according to Lonely Planet. A PO first opened as Berlinhafen in 1898. Parts of Aitape district were severely damaged by a tsu-

Figure 19



nami a hundred years later in 1998.

Here is a commercially used cancel on a 2d Huts of the District Office postmark dated July 6, 1925? In the flesh this could actually be 1926. Even if 1925 this is 6 months after the previous LRD of 2 January 1925. **This is a new LRD.**

THE DISTRICT OFFICES

Powell noted that some of the District Offices used hand stamps mostly on the back of envelopes, and less often as postal cancellations, or as “posting markers” on O.H.M.S. mail to Rabaul from government officials.

All 18 DO postmarks are very rare: all with “E” - “G” ratings. Non-OS overprinted frankings such as the three examples in the hoard (Eitape, Kavieng and Morobe) are particularly rare.



Figure 20

Type 31a EITAPE

ERD- ?/1/24 LRD- 17/9/24 Scarcity Rating “F”

A faint strike of the F rated “EITAPE” postmark. Powell notes this one as “something of a rarity in use during 1924”. The LRD is recorded as 17 Sept 1924. This one is clearly (but very faintly) postmarked ?7 OC 1924 hence is another new LRD.

Type 32 AITAPE

ERD- 21/1/25 LRD- 15/2/26 Scarcity Rating “E”

Postmarks for this locality had a spelling change in 1925. The postmark shown on the map spread shows an Aitape postmark dated Jun 4, 1926. The letters themselves are quite blurry but the date is clear. Loughran’s LRD is 15 February 1926, so this is another new LRD.



Figure 21



Figure 22

Type 32 variant POST OFFICE/AITAPE

Figure 7 shows an interesting POST OFFICE/AITAPE that has an even later ??/SEP/1926 date where the date format is different (being day above month above year instead of the normal M/D/Y- see Figure 6. This is a potential NEW sub-TYPE and in any case the new LRD.

TO BE CONTINUED IN NEXT ISSUE

MELBOURNE PPS STUDY GROUP

Meeting 25 May 2018

Attended by 10 people to view an incredible Modern PNG stamps collection presented by Lou Smit. Included was an array of Stamp Duty issues which most of us had never seen before. Many stamps were considered extremely rare, some unique, and all considered very collectable.

Subscription sheets were distributed (hoping to get new PPS members).

Our November meeting will provide the Royal Philatelic Society of Victoria with an insight into

our members Papua New Guinea collections. The following members have agreed to showcase 15 sheets from their collections:

- Munro Kennedy – Missionary Mail (15 sheets)
- Lou Smit – GRI stamps (15 sheets)
- Max Bulley – WW2 Censorship Mail (15 sheets)
- Frank Bagatin – OS Lakatoi stamps (15 sheets)
- Alan Grey – BNG and Papua Postal History (using RPSV fixed 5 frames)

Alan Grey (Convener)

Modern Matters

The following is an edited version of a report sent along by Roy Materne. He missed the May meeting in Brisbane due to a long-planned visit to PNG but the benefit is the information he sent along.

One highlight was a visit to Bukawa, the trip requiring an hour long and very rough ride in a fast 35-40kph Banana boat. Sightseeing in Lae and later in Port Moresby was a real revelation. My first visit to Lae since 1984, so many changes. What surprised me more were the large changes in POM that have occurred since 2011. Massive growth of the city, including high rise buildings and road networks. If you have some time check out Google Earth Pt Moresby. (Ed note – same response I had when looking at google view of Suva in Fiji, last visited some 40 years ago)



Vision City Post Office in Vision City Shopping Mall



Site of Huon Gulf Post Office (now closed)



Lae Post Office (with security guard in foreground)

I visited the only 2 PO's in Lae and most PO's in POM. In both cases time was limited. In POM I hired a car with driver for a "day". This involved quite a bit of driving and quick PO visits. Photo of Lae (not a great picture) and Huon Gulf which has been closed for some time and in POM, the Vision City PO.

Also obtained "proof" copies at the PO's I visited. I cannot guarantee I managed to get all Postmark impressions. Unfortunately some postmarkers and/or ink would not make good impressions. Note Unitech date was 10th May 2017... the year is wrong.





And, we also have a report from Greg Knight on his visit to PNG around the same time – held over for the next issue.

THE REVEREND GENTLEMAN OF NEW GUINEA

By Tony Griffin (Australia)

Reverend Gerald Sharp worked between the years 1898 and 1910 as a Curate at Hammer-smith with Montague Stone-Wigg who had been the first Anglican Bishop of New Guinea. Rev. Sharp no doubt heard many stories about the difficulties of spreading the Gospel to the inhabitants there and the challenges of working in an environment of high humidity, torrential rainfall and the ever present risk of tropical illnesses. On Bishop Stone-Wigg's death in 1918, Rev. Sharp took up the challenge and became the second Bishop of New Guinea.

His "Episcopal Palace" in Samarai turned out to be a three room house of coconut palms, palm wood and bamboo with a corrugated iron roof.

In 1920, Bishop Sharp attended the Lambeth Conference in England where he accidentally injured his leg and was told that he should not return to the tropics. Instead he was transferred to Brisbane as Archbishop until his death in 1933.

Very occasionally covers sent by him are seen at auction. These are recognisable as the majority were written to relatives in England. One such example addressed to Rev. H. J. Sharp in London (see Figure 1).

Dated 21 October 1912, it is correctly franked for the Empire ½oz. letter rate with a 2d. monocolour:

Rarer examples are those not addressed to relatives. They are recognisable only if you know his distinct handwriting and check for the Bishop's Mitre printed on the rear of these covers. This

example is to a Miss Scarth in Kent and is dated 17 December 1912 (see Figure 2).

The two x 1d. monocolours incorrectly pay double the Empire ½oz. letter rate which had been reduced to 1d. (Papua Gov't Gazette Vol. 7 No. 12 p77 dated 2/10/1912) on 1st November 1912, (no doubt an error).



Figure 1



Figure 2

BENEFIT FROM OUR EXPERTISE & PRESENTATION



Australia KGV 2d red '21' flaw "extremely rare in red"
Estimate A\$1250, Sold for A\$2875*



Victoria BN 436 Wombat Creek
Estimate A\$750, Sold for A\$3115*



New Guinea SG1 with FDI cancel
Estimate A\$600, Sold for A\$958*



Papua SG57 Wmk Upright Reversed
Estimate A\$1500, Sold for A\$1917*



Australia 1924 KGV 1/2d Lettercard with 'Burrinjuck Dam In Flood' view
Estimate A\$4500, Sold for A\$4792* (world record for scenic lettercard)



New Zealand Coronation artwork
Estimate A\$750, Sold for A\$1078*



Australia 1928 from Malaya with 'FORWARDED BY AIR MAIL' cachet
Estimate A\$500, Sold for A\$1318*



Western Australia 1882 'KOJONUP' unframed oval and numeral '29'
Estimate A\$1500, Sold for A\$6859*



Norfolk Island 1960s Photographic Essays etc.
Estimate A\$600, Sold for A\$1258*



South Australia three-volume Picture Postcard collection
Estimate A\$800, Sold for A\$3474*

* at Public Auction on 19 May 2018 (prices include Buyer's Premium)

Sell your Australia, New Zealand & Pacific Islands material in the strongest market

Consignments are now being accepted for our upcoming auctions:

August Stamps, Postal History & Picture Postcards

November Coins, Banknotes, Sporting Memorabilia & Collectables

abacus auctions

Office: 19A Hampshire Rd, Glen Waverley, Victoria, 3150, AUSTRALIA

Postal: Post Office Box 296, Mt Waverley, Victoria, 3149, AUSTRALIA

Phone: (03) 8513 0595; International +61 3 8513 0595

Email: info@abacusauctions.com.au

Web: www.abacusauctions.com.au



Torsten Weller

Gary Watson

AGM AND GENERAL MEETING SUMMARY REPORT

Brisbane, Queensland – May 12 2018

The May 12 meeting was held in a suburb of Brisbane, Queensland. For those not familiar with the advertising for Queensland, it goes “Ah Queensland, beautiful one day, perfect the next”. We’re pleased to report, it certainly delivered on that!

The organising committee comprised Mark (‘Robbo’) Robinson, Ted McPheat and Maurie Clark. They put a huge effort in and the meeting went like clockwork. While the numbers were not equal to the 2013 meeting, the spirit and level of enthusiasm was clearly evident.

There was general agreement that the home-made cake provided by Ted’s wife was one of the highlights of the day.

The AGM approved two minor changes to the Rules, removing the preference for meetings to



Front Row, from left to right: Bruce Anderson, Mark (Robbo) Robinson, Joan Orr, Maurice Clark, Tony Griffin, Jerry Blair.

Second Row, left to right: Richard Muller, Gary Watson, Murray Collins. John Graham, Jeff Marks, Greg Melick.

Back Row, left to right: Ted McPheat, Shane Miers, and Denver Brodsky.

be held in the UK. The budget was approved, with a vote of thanks to Lorraine Fitzwater for her dedication and support. It was agreed that the meeting for next year would be held in Sydney, to coincide with the June stamp exhibition. It was noted that the connection with a larger philatelic event might draw more members to attend.



Above: Joan Orr sharing advice on exhibiting your stamps - from one who truly knows!



Above right: (Left to right) Jerry Blair, Murray Collins, Gary Watson

Right: While Roy Materne, the previous editor of this journal, could not attend the meeting, he did send along this PNG artifact. It is to be bestowed on the editor and sit on his/her desk, hopefully inspiring ever-better journals.



PAPUA NEW GUINEA CALLING

AGM and General Meeting Summary Report

There was a well-supported raffle, with some substantial prizes donated by Robbo (Ed – noted that Ted “Mr Lucky” McPheat carried off 2 of the 4 prizes). All proceeds went to the society.

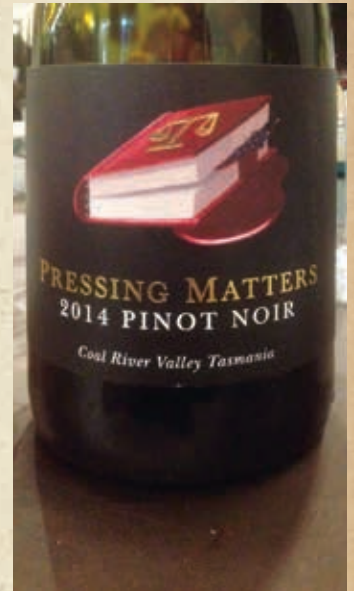
The meeting that followed included a number of presentations and follow-up discussion.

- Jerry Blair talked about certificates – benefits and pitfalls (Ed – see Mark Robinson’s useful articles in issues 272 and 273 last year)
- The ‘go-to’ expert on GRI’s, Murray Collins, offered a fascinating talk on the stamps and the characters and stories surrounding these issues.
- A presentation on auctions and the story behind the emergence of Ab-

acus Auctions was given by Gary Watson. Later on, there was also time to inspect some of the lots offered in their first (now concluded) auction.

- And to wrap up the day, Joan Orr discussed exhibitions – and perhaps nobody better qualified to introduce that subject.

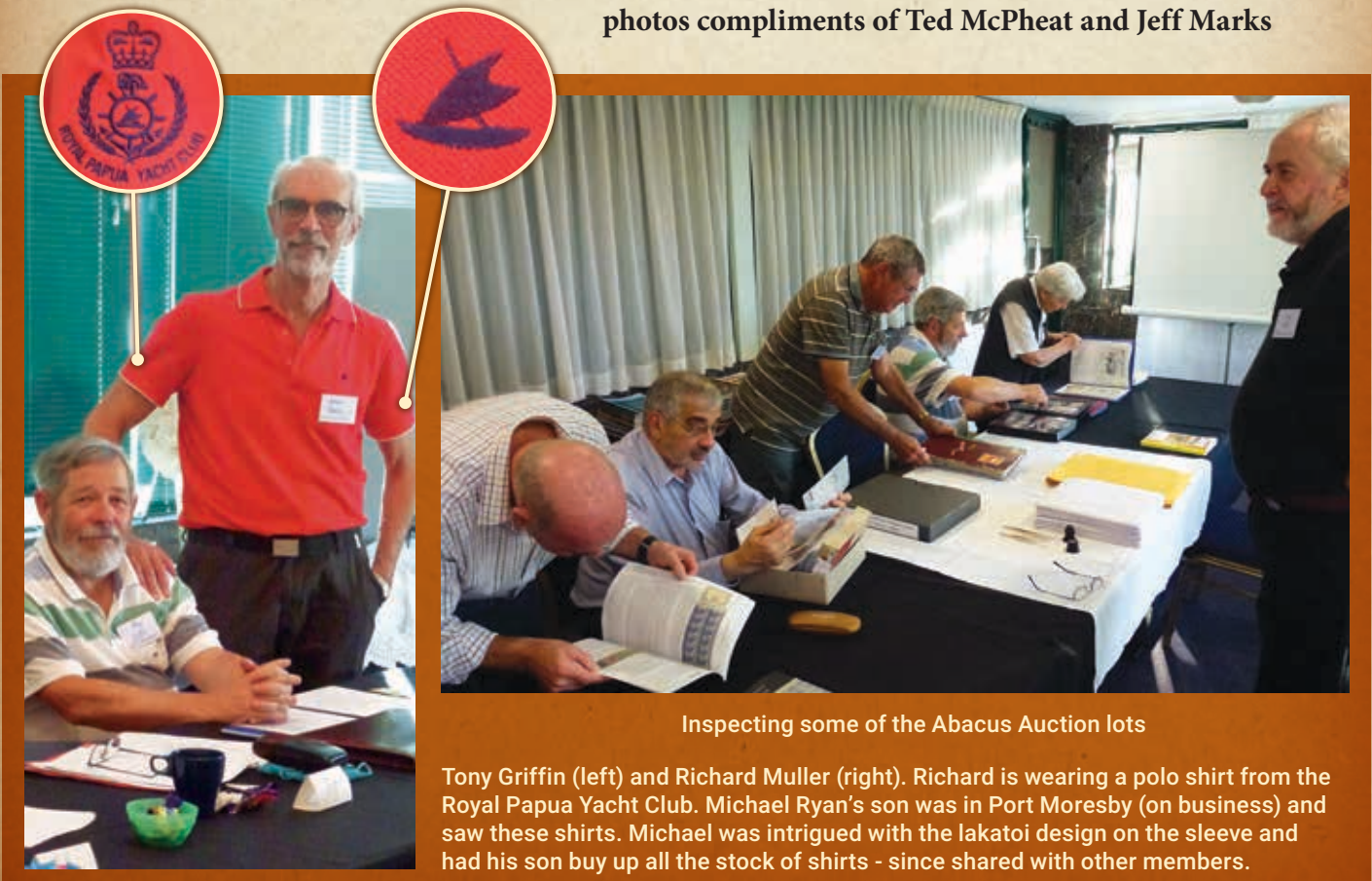
The day wrapped up with a dinner for members and (very patient!) partners. We were extremely grateful to Abacus Auction for sponsoring the dinner. Also, the wine was donated by the one member who came all the way from Tasmania, Greg Mellick (see photo and note the label – would it surprise you to know that Greg is in the legal profession?).



One of the outstanding wines enjoyed at the closing dinner

Richard Muller

photos compliments of Ted McPheat and Jeff Marks



Inspecting some of the Abacus Auction lots

Tony Griffin (left) and Richard Muller (right). Richard is wearing a polo shirt from the Royal Papua Yacht Club. Michael Ryan’s son was in Port Moresby (on business) and saw these shirts. Michael was intrigued with the lakatoi design on the sleeve and had his son buy up all the stock of shirts - since shared with other members.