



# PAPUA NEW GUINEA CALLING

OFFICIAL JOURNAL OF THE PAPUAN PHILATELIC SOCIETY

eMail: [papuaphilatelicsociety@gmail.com](mailto:papuaphilatelicsociety@gmail.com)



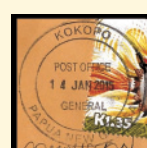
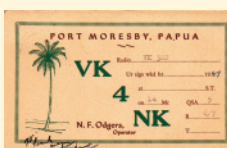
PUBLISHED IN COOPERATION WITH 'AUSTRALIAN STAMPS PROFESSIONAL' MAGAZINE

## Featured in this issue

Page	Content	Page	Content
2.	<b>A Message from the Papuan Philatelic Society's Chairman</b> <i>Frank Wilson</i> <i>United Kingdom</i>	8.	<b>Papua 4d Mono Cover to Wagin, WA</b> <i>By Jakob Schmitt</i> <i>(Australia)</i>
2.	<b>Q&amp;A</b> <i>Members' share Questions &amp; Answers</i>	9.	<b>Modern Matters</b> <i>Reports from PPS members</i>
3.	<b>Roy Materne - a Gold Medal Award</b> <i>A tribute to Roy Materne for his splendid service in sustaining "PNG Calling" above and beyond the call of duty.</i>	10.	<b>Fourth Archbold Expedition Cover</b> <i>By Otto Graf</i> <i>(Germany)</i>
4.	<b>New Lakatoi pieces of interest</b> <i>By Mark (Robbo) Robinson</i> <i>Australia</i>	11.	<b>The Reverse Watermarks of the Small PAPUA lithograph issues SG49 - SG71</b> <i>By Mark (Robbo) Robinson</i> <i>Australia</i>
6.	<b>Stamps were always a business in Papua</b> <i>By Richard Muller</i> <i>Australia</i>	<b>PNGC Special Notices</b>	
		2.	<b>Papuan Philatelic Society Officers and contacts</b>
		5.	<b>PPS Membership invitation</b>



*Symbol of the Chair: The Sepik Haus Tambaran Orator's Stool*





## PAPUAN PHILATELIC SOCIETY OFFICERS

### Chairman:

**Frank Wilson – UK.**  
f.j.wilson@btinternet.com

### Vice Chairmen:

**Roger Lee – UK**  
**Mark Robinson – Aust.**  
robbo\_robinson60@hotmail.com

**Richard Muller – Aust.**  
richard@muller.id.au

### Hon. Secretary:

**Simon Nanson – UK**  
simon.nanson@tesco.net

### Honorary Treasurer:

**Lorraine Fitzwater – UK**  
lorraine@highexpert.com

### Advertising & Promotion:

**Mark Robinson (Aust.)**  
robbo\_robinson60@hotmail.com

### Australian Contact:

**Maurie Clark**  
margck5@bigpond.net.au

### PPS Auctioneer:

**Frank Wilson**  
ppsauktion@btinternet.com

### Advertising and Promotion

**Mark Robinson**  
robbo\_robinson60@hotmail.com

### Distribution:

**D Brodsky (Aust.)**  
**R Jones (EU)**  
**S. Zirinsky (Americas)**

### Publisher:

**Richard Muller**  
(see PPS Vice-Chairman)

### CONTACT DETAILS:

Please note all Officers of the PPS and the Publisher may also be contacted through the following email address:

papuaphilatelicsociety@gmail.com

# A Message from the Papuan Philatelic Society's Chairman

*Dear PPS Members,*

Well done! My congratulations go to Richard and Mark for their efforts in producing the first PNG Calling in the new style.

Having been an official of other clubs and Societies in the past, all I can say is that it will get easier (just). My thanks also go to John Leah (publisher and editor, **ASP**) for his efforts in helping us in our efforts.

The articles included were of a varied nature and of the type that **PNG Calling** needs.

Similar articles are required for future editions. If you have a new postmark find, variety or even news of New Issues please let Richard know.

By the way, please remember to pay your subscriptions!

I will strike the 'Sepik Orator's Stool' with my palm leaves: I hope that this little 'message' works!

Best wishes,

*Frank Wilson*

Frank J. Wilson, Chairman, (UK)



Chairman's symbol: A 1930s Sepik Orator's Stool (Teket)\*. Museum of Victoria

\*The Sepik Orator's Stool  
The Sepik "Orator's Stool" or "teket" was chosen by ASP as an iconic symbol for the role of the PPS Chair. In the Sepik Spirit House ("Haus Tambaran"), tribal elders communed with the spirits and argued village politics using the "teket" to

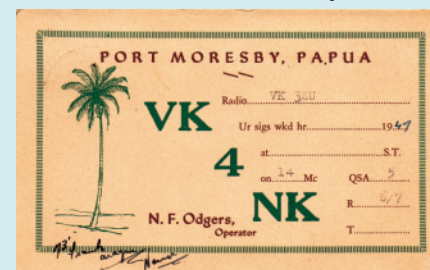
affirm the truth of their words. Striking it with palm leaves, they called on ancestors for support, placing leaves upon it to affirm the truth. We trust this ancient tradition may inspire present and future occupants of the PPS Chair and the "PPS elders" in their quest for philatelic nirvana.

## Q&A

### Q&A 1:

A year or so ago I won an auction lot and in the box was an album of PNG stamps. On one page of the al-

bum was what looked like an ordinary post card (**see 1st image**) addressed to Victoria bearing 2 Australian stamps cancelled at Port Moresby in 1947. However, the interesting thing about this card was that when I removed it from the album, it was a Ham Radio card (see 2nd scan). It is almost 70 years old



Articles, words and opinions expressed in this journal are not necessarily endorsed by any or all of the following: the Papuan Philatelic Society; the Papua New Guinea Calling Publisher and Editor; the Publisher and Editor of Australian STAMPS Professional or the principal or management of Mediamatic Pty Ltd.

Copyright © 2016. This work is copyright in terms of literary, layout and graphic content which is vested variously in the PPS, Mediamatic Pty Ltd, contributors, authors, artists and photographers.



## ROY MATERNE - A GOLD MEDAL AWARD

### A Tribute by Richard Muller

Look through my back issues of *Papua New Guinea Calling* shows that Roy Materne took over as Editor of the PPS Journal for the July 2013 issue.

He did so however, with a qualification of "(Interim)". He only stepped in when nobody else offered to take it on and it was understood that it was on a temporary basis.

Before that, he edited '*Modern Matters*', chasing information, details and updates on postal activities in PNG. That involved many on-the-ground meetings, visits to offices, calls, follow-ups and similar.

Nothing was ever simple or straightforward but he did a brilliant job of ensuring that members were kept up-to-date with new issues, cds changes, special markings, post offices opening and closing and many other mat-

ters of interest. When he no longer called into Port Moresby, he tried to continue from Australia but it became ever more difficult.

But, of course, he didn't really step back - he then took on the mantle of our "Interim" Editor.

Just have a look at your back issues for the past few years to see what a terrific job he performed for us. Quite simply, there would have been no journal if not for Roy.

Well, he now takes a well-earned rest from his editorial chores though we do hope he will continue to contribute interesting and informative articles to *Papua New Guinea Calling*. I believe he may have some travel around Australia in store - probably much easier to navigate than trying to pin down the details of the latest post office opening in Papua New Guinea!

It seems appropriate at this time (not long after the Rio Games) that we award a special Gold Medal to Roy, along with a round of applause and a "thank you" from all PPS members.



and would be of interest to some of our Papuan Philatelic Society members. Could someone please respond with more information on these cards? - JM (member)

### Q & A 2 on Burui:

**BG (member):** I've had an enquiry re Burui in 1946, just a brief answer needed. I think it was a big but brief supply depot in 1945-6. Correct?

**LB (member):** I had not heard that Burui was a supply depot in 1945-6. It was not reopened post war in the civil admin period. Instead, Ormsby tried to establish a Patrol Post on the Catholic Mission land at Marui but the mission objected.

**BG:** I've got it wrong then. In 1946 it was proposed to open a Post Office there, and I was wondering why.

**LB:** The whys of it would include

the fact that DO Niall's admin. was strapped for cash and he appears to have actively looked at existing pre-war airstrips as places from which to achieve most admin. value from his limited staff.

He opened "remote" posts and directly controlled them from Wewak District Office - as they were too distant to be under any of his sub districts [Wewak, Angoram or Aitape]. He opened Telefomin in 1948 and Green River in 1951.

Marui was favoured over Burui by ADO Angoram as it was in the tribal area of his most troublesome people the Iatmul; the only land in the Iatmul area that did not flood. Burui was rejected as while it was not far away it did not have river access to the Iatmul. Marui was opened as a patrol post for some time but had to be closed because it was on mis-

sion land and the mission wanted to re-open their own station.

In the original analysis - Ambunti was rejected as too remote, but it was re-opened after Marui was closed. Flood prone Pagwi, adjacent to Marui was finally opened in 1964.

Angau used Burui as a base and transit station until the arrival of the Japanese and afterwards they stationed police there - who were still there when Maprik was re-opened by the post war civil admin.

There was confusion - Wakeford who reopened Maprik asked whether Marui/Burui were to be administered from Maprik or Angoram. Niall set the boundary north of Jama village - placing Marui/Burui in the Angoram sub district. ■



# New Lakatoi Pieces of Interest

Being a collector of all things Lakatoi it's always great when new and interesting pieces fall out of collections purchased at auction with limited description.

Here are a few of these finds that always keep me interested in the never ending search for new material.

## Eureka moment No. 1

I have always been a mint collector until this year and discovered that there is little range left to increase my interest unless I look at collecting Used as well as Mint, so my first intro into the used arena has "I think" paid dividends (Figures 1a and 1b).

The SG86 Watermark Crown to Left of A 2d Mono issue had a cancel that I could not find in my rag tag copy of Roger Lee so I posted

**By Mark (Robbo) Robinson PPS Brisbane**

it on an internet discussion group and the Facebook PPS members section to see if I could gain some further information.

Jackpot, the replies came in thick and fast. The TPO post mark was identified straight away as a Travelling Post Office cancel, used on mail not able to be cancelled due to time or arrival destination and therefore cancelled on the journey to the end destination.

The example shown is TPO 6 S&WR dated UP 1FE12, thanks to

the help of members of the above groups it led me to the Toowoomba Stamp club website that has a detailed publication on all things to do with Queensland cancels.

Below is an extract from their online book explaining the route taken on the S&WR rail line.

TPO S&WR, Southern and Western Railway Southern Line: Brisbane – Toowoomba – Warwick – Wallangarra Western Line: Toowoomba – Dalby – Roma – Charleville – Cunnamulla 1877 – 1932.

It's an ugly stamp yet it's also my first TPO cancel and I am pretty proud of it.

## Eureka moment No. 2

Second discovery in the auction lot was an example of a strip of 3, SG88 Mono Colour 4d Watermark, Crown to Left.

It was cancelled with "Money orders section/ (Acc)ountant's Branch" and dated "6Jun1919" in purple.



Figure 1a (above left): Robbo's "intro" to his new field of "used". Figure 1b, above right: For the reader's convenience, a rotated view of this unusual cancellation that caught "Robbo's" eye. Does this TPO example mean others? (A TPO cancel on a Papuan stamp may amuse readers as they well know there have been no railways in Papua, apart from minimal mining and military efforts - Pearson & Bromage documented 150!).

Figure 2, below and upper right: A "mystery" cancel for Robbo's readers to solve.





I would love to hear from other collectors if more of these exist or if anyone has any information on the cancel.

**Eureka moment No. 2**

Members of the Papuan Philatelic Society (PPS) communicate and meet other members from around the world on a regular basis in person or via the internet, which was part of the attraction for me to become a member.

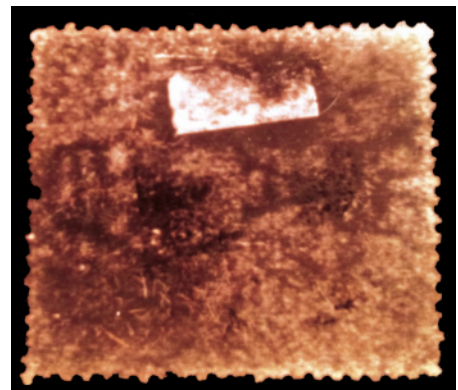
Another PPS member sent me information on the stamp illustrated in **Figure 4a (centre right)**, and to say I was excited was an understatement. He has allowed me to write this stamp up as information for other collectors.

The stamp was purchased from eBay just recently and as you can see from the picture, it is cancelled with the TAX handstamp and cancelled Port Moresby dated "30 Jun 19". This on its own is a nice combination to have. However, when you take a closer look at the watermark (**Figure 4b, upper right**) you will see that it is Crown to Right of A listed in SG as 90w and not priced used.

"For reference to collectors just starting out, Stanley Gibbons (SG) references the watermarks for Papua as seen from the back of the stamp"

What a great find!

"Run for the albums and check the watermarks on or around this date cancel as its fair to assume that at least 1 sheet of SG90w can



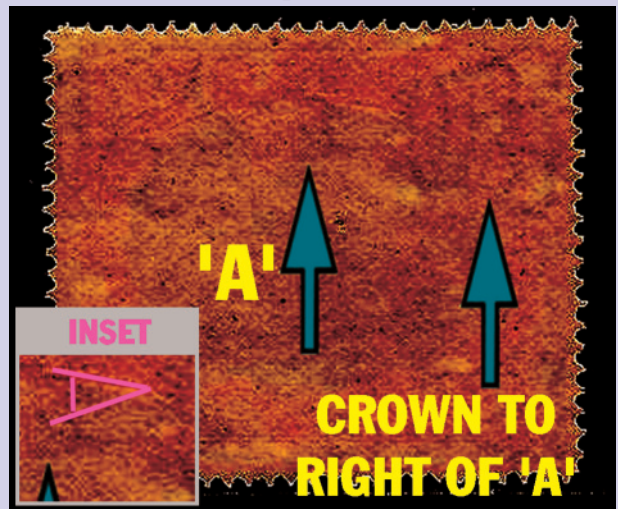
**Figures 4a & 4b:** Images of PPS member's discovery of the rare 'Crown to right of A' watermark. He sent copies to "Robbo" and stirred his interest no end.

now be identified as being sold via SG90w is the hardest of the Crown the Port Moresby Post Office". In to right of A watermarks in this my experience the 1/- Mono issue issue to find. ■

**SPOTTING THE "CROWN TO RIGHT OF A" WMK**

Watermarks can really challenge developing collectors. Murky or ill-defined, they can hide and resist interpretation. The "Crown to right of A" can be such a challenge. Even without watermark fluid, however, computers can help. **Fig. 5, right**, has its colour and contrast strongly tweaked to make the watermark more visible, with arrows added.

Seen from the back of the stamp, the Crown is clearly to the right of the 'A' (see Inset).



**PAPUAN PHILATELIC SOCIETY MEMBERSHIP**

Papuan Philatelic Society (PPS) membership is open to anyone who collects or has an interest in the stamps and postal history of 'Papua New Guinea'. The PPS covers all periods from the early days of British New Guinea (later Papua) and German New Guinea in the 1880's, to modern PNG with its many colourful stamps and cards. The membership is international with links in Australia, USA, UK & Europe, New Zealand and PNG itself. It is one of the strongest and most active philatelic societies.

**MEMBERSHIP?** Simply contact: [papuanphilatelicssociety@gmail.com](mailto:papuanphilatelicssociety@gmail.com)





# Stamps were always a business in Papua

**By Richard Muller**

From the earliest days of the lakatois in BNG, stamps were always a “nice little earner” for the territory budget. The importance of stamp sales was never more apparent when the moncolours of 1911 were fairly promptly replaced with the bi-colour design – in clear response to the reaction from the worldwide collector market.

See my brief article in issue 266 (June of last year, pages 22–23) on how important the collector market was, even in 1908. My impression is that a very large portion of the registered mail from

TERRITORY OF PAPUA  
General Post Office,  
Port Moresby, Papua, 31 MAY 1937, 193 Requisition A No. 859

I have to acknowledge receipt of your letter of 10/4/37 together with the sum of £ 5 : 5 : and to enclose the following Postage Stamps in execution of your order:—

ORDINARY		OFFICIAL		AMOUNT	
No.	Value	No.	Value	No.	Value
✓ 1d.	1d.	✓ 1d.	1d.	✓ 1d.	1d.
✓ 1½d.	1½d.	✓ 1½d.	1½d.	✓ 1½d.	1½d.
✓ 2d.	2d.	✓ 2d.	2d.	✓ 2d.	2d.
✓ 3d.	3d.	✓ 3d.	3d.	✓ 3d.	3d.
✓ 4d.	4d.	✓ 4d.	4d.	✓ 4d.	4d.
✓ 5d.	5d.	✓ 5d.	5d.	✓ 5d.	5d.
✓ 6d.	6d.	✓ 6d.	6d.	✓ 6d.	6d.
✓ 9d.	9d.	✓ 9d.	9d.	✓ 9d.	9d.
✓ 1s.	1s.	✓ 1s.	1s.	✓ 1s.	1s.
✓ 1s. 3d.	1s. 3d.	✓ 1s. 3d.	1s. 3d.	✓ 1s. 3d.	1s. 3d.
2s.	2s.	2s.	2s.	2s.	2s.
2s. 6d.	2s. 6d.	2s. 6d.	2s. 6d.	2s. 6d.	2s. 6d.

Insurance (10s. per cent. Minimum 6d.) ... .. £  
EXCHANGE ... .. £  
TOTAL ... .. £ 5 : 5 : ✓

TERRITORY OF PAPUA  
General Post Office,  
Port Moresby, Papua, 31 MAY 1937, 193 Requisition A No. 859

Sir,  
I have to acknowledge receipt of your letter of 10/4/37 together with the sum of £ 5 : 5 : and to enclose the following Postage Stamps in execution of your order:—

Of the above 125 was used for postage. Checked by \_\_\_\_\_

267 E.G. Strumpf  
207 Masonic Bldg.  
Yakima  
Washington USA

Stamp Distributor

8270/3.37.—10 bks. [P.T.O.]

Papua involved the mailing of postage stamps to fulfil overseas mail orders.

The nice registered cover (see **Figure 1**) from 1937, has nothing special about the stamp or the postmarks – the cachet on the front, however, is rather attractive. One assumes that the re-



**Figure 1, bottom left:** The Registered cover at the heart of this story.  
**Figure 2a, top right:** The invoice form inside, giving a glimpse of stamp trading in the late 1930s era.  
**Figures 2b & 2c, upper and mid left:** Close-ups showing details of the order, including the Requisition header prepared by the Stamp Distributor.  
**Figure 2d, top, opposite:** Some detail of stamps ordered.



No.	Value	No.	Value	No.	Value
	½d.	½d.	.....		
✓	1d.	1d.	✓ 1d.		
✓	1½d.	1½d.	.....		

recipient, E.G. Strumpf, supplied an addressed envelope with his order for Papua stamps.

The Port Moresby cds is dated 9JE37. The same Moresby cds is seen on the back, along with a Jul/12/1937 "SAN PEDRO CALIF REGISTERED" cds and a JUL/15/1937 "YAKIMA WASH REGISTERED" cds.

The enclosure (**Figure 2a, b, c and d**), was in the envelope. There was enough volume of orders for stamps that the Territory printed forms for returning orders to buyers. The writing seems to be in pencil, though reasonably legible. On the reverse of this page is another form letter (**Figure 3**) – certainly saves typing up the same information!

And don't you just love the title of the person signing the form – "Stamp Distributor"...

I had a quick look for information on E.G. Strumpf and the only locatable reference to his name appeared in Washington state (USA) legal records from 1937. I did not have the patience to read through the volumes of court records so cannot add anything about his collecting interests.

To give you an idea of the revenue generated by the stamp market, the Territory of Papua recorded (according to *The Pacific Islands Year Book* of 1939) income of GBP9312 from 'Post Office' in 1937. That represented 5.4% of total revenue (the largest being customs and excise). Of course, the post office revenue was not solely stamp sales but the sale of stamps to collectors, who will never actually use the stamps for postal usage, is good business indeed. ■

**Postscript:**

The Strumpf on the cover's address was highly likely to have been Elwood Gottfried Strumpf, born

circa 1910 and aged about 27 years at the time this order was posted from Port Moresby. He was married, with one known child. He died in 1988, aged around 78.

**Figure 4, right:** A postcard showing the Masonic Building in Yakima, the address to which Ellwood G. Strumpf directed his order. Built in 1911 at the height of the Masonic movement, in 1937 it served the Masons and also rented out commercial space.



**Figure 3:** A version of the form letter enclosed with the completed order, with some paragraphs omitted. Colour manipulated for easier reading.

**DEPARTMENT OF THE TREASURER**

General Post Office,  
Port Moresby, Papua,

Sir, \_\_\_\_\_, 193\_\_

I have to acknowledge receipt of your letter of.....and in reply to advise that Stamps of the various denominations printed on back hereof will be supplied on receipt of a Money Order, or Draft on the Bank of New South Wales, Port Moresby, payable to the Chief Postmaster. Money Orders from beyond Australia are re-issued at Brisbane (the office of exchange) and a fee of 3d. per £5 or fraction thereof is deducted. Remitters should, therefore, make allowance for this.

When ordering stamps please state exactly what is required, i.e. denomination and number of same. Write plainly, and select a second choice in case the first is out of stock.

Please note that if specially-desired stamps or rows of stamps are on hand in broken sheets they will be supplied, but on no account will we break sheets for this purpose alone. The only certain way of getting a specially-favoured stamp is to buy a whole sheet. A full sheet contains 40 stamps.

All orders above the value of £2 are insured when despatched and purchasers are requested to include sufficient in the remittance to cover this contingency; otherwise the amount will be deducted from the amount forwarded.

If purchasers express their desire to have their orders forwarded without being insured, the instruction will be carried out and the stamps despatched at the sole risk of the purchaser.

Yours faithfully,

\_\_\_\_\_  
STAMP DISTRIBUTOR



# Papua 4d Mono Colour Cover to Wagin, WA

This Port Moresby registered cover no. 219 franked by the 1911 mono colour 4d pale olive-green lakatoi of Papua and postmarked on June 9, 1919 is addressed to Mr. Rob(t). A. Leibenow of Wagin, approximately 225 km south-east of Perth, WA.

**By Jakob Schmitt (Australia)**

grated from Germany on the steamship *Kaiser Wilhelm II No.1*. The *Kaiser Wilhelm II* was built for the Reichspostdampfer (Imperial post steamboat) service to Australia. It was at that time, the largest ship of the North German Lloyd (NDL) line, designed to win many passengers for this relatively new line. E . G . O . Liebenow arrived in Australia in the Port of Melbourne in 1890. He lived for ten years in Melbourne, and also for ten years in Belfast (Port Fairy). I'm not sure in which order. Liebenow at the age of 22 was residing at No.454 Harris Street, Ultimo, NSW, and worked as a salesman and printer. On December 7 1911, and still single, he appeared before Mr. William Edward Brown, Justice

of the Peace of New South Wales, and swore the oath for his naturalization. In response to the outbreak of the First World War and the subsequent spirit of hostility and persecution in Australia, he changed his name on 4 July 1921 by Deed Poll to Ernest Lewis through the solicitors Dalrymple and Blain, 22-39 Hunter Street, Sydney.

Between 1875 and 1959 more than a dozen Liebenows/Leibenows are recorded in the registers of Western Australia, whose roots lead to Germany. There are still descendants living in WA today.

The addressee of the Papua letter is almost certainly Robert Adolph Johannes Leibenow. He was married in 1913 in Victoria to Mabel Louise Johnstone. The couple owned property in Belmont, WA. Robert Adolph Hans Johannes Liebenow died in 1959 in Perth, at the age of 72. Obviously, he had changed his name back to its original form at some stage.

The Union Reefs mine is located in the northwest of the Northern Territory, about 170 km southeast of Darwin and about 164m above sea level. It is or was a gold and silver mining. Thus, the envelope is derived from the administration of the Union Reefs Mine, Darwin, was used in Port Moresby, and is backstamped with transit cancellations of Melbourne (June 25th) and Perth (30th June 1919).

Many thanks go to my collector friend Robert Benoist for his remarkable genealogical knowledge and to the work staff.



Ernst Gustav Otto Liebenow was born on 24 September 1889 in the city of Berlin, Brandenburg, in the German Reich. He emi-

grated from Germany on the steamship *Kaiser Wilhelm II No.1*. The *Kaiser Wilhelm II* was built for the Reichspostdampfer (Imperial post steamboat) service to Australia. It was at that time, the largest ship of the North German Lloyd (NDL) line, designed to win many passengers for this relatively new line. E . G . O . Liebenow arrived in Australia in the Port of Melbourne in 1890. He lived for ten years in Melbourne, and also for ten years in Belfast (Port Fairy). I'm not sure in which order. Liebenow at the age of 22 was residing at No.454 Harris Street, Ultimo, NSW, and worked as a salesman and printer. On December 7 1911, and still single, he appeared before Mr. William Edward Brown, Justice



## Some upcoming articles in your next PAPUA NEW GUINEA CALLING JOURNAL

- The Benefits and Downsides of Authenticity Certificates - by Mark (Robbo) Robinson
- The Accidental Postal Historian - by Alan Gray
- Further New Double-circle Cancellations - by Steve Zirinsky (in Modern Matters)
- Papua 1932 Pictorial Issue Designs with Photographic Sources - by Simon Nanson
- Update News on Reverse Watermarks - by Mark (Robbo) Robinson

**Plus much more!**







# MODERN MATTERS

The Papuan Philatelic Society is fortunate to have re-established contact with PNG Post.

Banian Masiboda is the Philatelic Manager of the Philatelic Department and he has been our main contact in the past. We hope he will be able to continue to provide current details on a regular basis.

Mr Masiboda's support will make a great contribution to the future progress of 'Modern Matters'. *Papua New Guinea Calling* certainly appreciates his assistance.

A summary of post office openings and closures has been provided (some going as far back as 2003). This will undoubtedly enable many PPS collectors to update records.

Input from members on this topic will always be welcome.

**Doug Spencer reporting:**

**2016 Uprated Provisionals**  
Continuing on from the 2015 issues as listed by Steven Zirinsky in the March 2016 issue of *Papua New Guinea Calling*, a further 3 stamps (illustrated at bottom) have been issued.

Again they use the Personalised Stamps paper, 40 stamps per sheet with no labels.

**PNG at Singapore Expo**

Contrary to information previously provided by the PNG Philatelic Bureau, it has now listed the Singapore Expo stamps as a supplementary

issue with "LIMITED STOCK".

Details of the issue, including images, are included in the 2015 Annual Album, however neither the stamps nor the mounts have as yet been supplied at the time of writing. Curious.

**Steven Zirinsky reporting:**

**Double ring cancel**

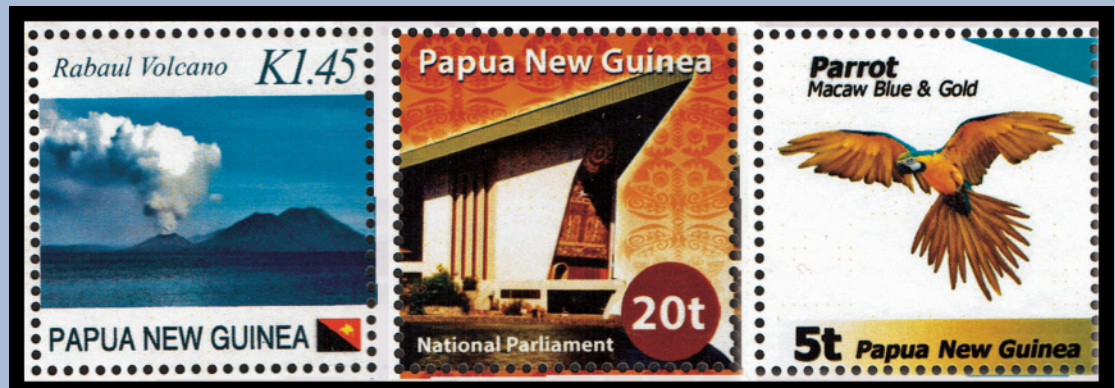
Further double ring cancels have emerged, this time from Kundiawa. One is illustrated at right. More are likely.

At mid right is an unusual Personalised stamp recently found, at the K1.35 rate. Under the "NDB" is written "Haus Moni Bilong Yumi", or "Our bank".

Post Office Closed	Reason	Date/year
Misima	Fraud	20/12/2013
Baimuru	Business decline	20/12/2013
Paiam	Mismanagement	1/05/2012
Kerevat	Business decline	2013
Warangoi	Fraud	2012
New Rabaul	Burnt	2015
DWU (Madang)	Business decline	2015
Huon Gulf - Lae	Business decline	2014
Badili	Building Sold	2003
Jackson	Building Sold	2003
Tari	Fraud	31/01/2015
Post Office Opened/reopened		Date
Gerehu		03/06/2016
Kikori		24/05/2014
Arawa		18/02/2014



◆ PNG Calling invites keen "Modern PNG" members to submit their best "finds"!



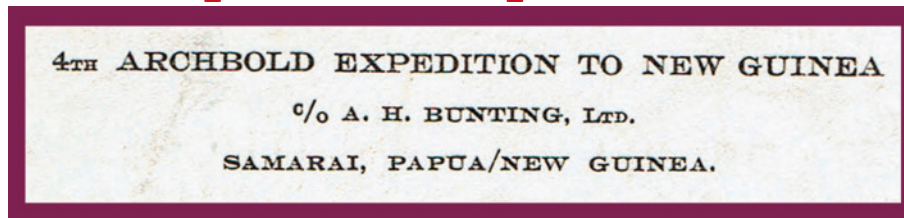


# Fourth Archbold expedition patrol cover

By Otto Graf  
(Germany)

Patrol post covers are very popular amongst PNG collectors. mostly for their boxed markings.

Not every patrol post cover, however, has to be marked this way, as I will show with this article. The story began when a PNG expedition cover was offered (*below*). I was just in the midst of a move and had no reasonable internet access to check for its merits.



So I placed a smaller bid, but still got the cover. Now, having had time for a closer inspection, an interesting story unfolded.

Richard Archbold (1907 - 1976) was an American zoologist. who had inherited the means to pursue his research. In the 1930's Archbold started to finance and lead expeditions to New Guinea to research its fauna and flora.

The first three expeditions took place from 1933-34. 1936-37 and 1938.39 respectively and were all led by Archbold himself. After

WWII there were four more expeditions to New Guinea, in which he did not participate personally.

The 4<sup>th</sup> Archbold Expedition to New Guinea, the first after the War. was carried out for the American Museum of Natural History and led by Leonard J. Brass. an Australian botanist.

He was accompanied by two zoologists. Hobart M. van Deusen and Geoffrey M. Tate as well as an assistant Kenneth M. Wynn. The purpose of the expedition was the collection and study of animals and plants. It began in March of 1953 and had to be ended several months prematurely in November of the same year. Geoffrey M. Tate suffered a stroke and had to be transported home to the USA.

My cover of the Archbold Expedition still holds its letter written by Geoffrey M. Tate. It is dated 29 March 1953 at Menapi. Therefore it is a document from the beginning of the expedition. He writes that the two main parts of the

expedition are the climbing of Mt. Maneo and the main mountain on Goodenough Island. Even if the mountains may have been climbed before. no geographical or zoological survey of them existed.

They were planning, with plenty of time for the two endeavours, to collect as many specimens as possible. He writes, "the Museum wanted quantity and they are sure going to get it." He also writes that he would travel home via England but be home about February 1954. Besides that, the letter contains some information on how mail communication was maintained.

The return address of the letter reads "address all mail in care of our agents A.H. Bunting Limited, Samarai, Papua/New Guinea" (*top right*). He also writes about mail delivery and dispatch: "If a letter gets as far as Samarai there is a weekly service out of that salubrious spot. but the difficulty is getting the letter to Samarai (*see bottom left*). We are, I suppose, only about 100 miles away as the good old crow flies, but it would be almost a three week walk for a man, and anyway, there are no men who want to walk that way. In a sort of passing-the-buck fashion, we send mail to Baniara, a Police station about four miles away, whenever we think there may be a Govt. boat due, and leave it to them."

In a map in the expedition report, Baniara is indeed the only Government Station, besides the towns of Samarai, Tufi and Esa'ala. all about the same distance from Menapi.

Thanks to this explanation in the accompanying letter it is obvious that the cover was transported with the help of the police station in Baniara and a government boat.

**So it is a patrol post cover even without having a marking of the station.**





# Breaking News on the Reverse Watermark Front The Reverse Watermarks of the Small PAPUA Lithograph Issues (SG49 to SG71)

By Mark (Robbo)  
Robinson PPS Brisbane

Great news at hand since writing about reverse watermarks for the first edition in the new **ASP/PPS** format.

Thanks for this development go to Mr Jeffrey Marks who is a long standing NSW PPS member. After reading the last article, he has brought to light yet another reverse watermark that has not been found until now.

Jeff has sent images (Figures 1 & 2) that qualify the discovery of SG52 Upright REVERSE in used condition, and with this new information I have updated the table of known examples below.



Figure 1, above: The used 4d Small Papua. Figure 2, right: Close-up of the back leaves no doubt of the reversal.

## List: Updated examples of known Reverse Watermarks "Single stamp numbers"

SG51	2½d	Perf 11	Bright-ultramarine	Upright REVERSE	21 Mint* & 1 Used
SG51a	2½d	Perf 11	Pale-ultramarine	Upright REVERSE	1 Used
SG51a	2½d	Perf 11	Pale-ultramarine	Upright Inverted REVERSE	30 Mint* & 3 Used*
SG52	4d	Perf 11	Sepia	Upright REVERSE	1 Used
SG52	4d	Perf 11	Sepia	Upright Inverted REVERSE	6 Mint*
SG52	4d	Perf 11	Sepia	Upright REVERSE	1 Used
SG53	6d	Perf 11	Myrtle-green	Upright REVERSE	1 Mint
SG53	6d	Perf 11	Myrtle-green	Upright Inverted REVERSE	1 Used
SG55	2d	Perf 12½	Purple	Upright REVERSE	1 Mint
SG57	4d	Perf 12½	Sepia	Upright REVERSE	1 Mint
SG57	4d	Perf 12½	Sepia	Upright Inverted REVERSE	2 Mint
SG62	2½d	Perf 11	Dull-blue	Sideways REVERSE	3 Mint
SG62	2½d	Perf 11	Dull-blue	Sideways Inverted REVERSE	6 Mint
SG69	2½d	Perf 12½	Dull-blue	Sideways REVERSE	1 Mint
SG07	4d	Perf 11	Sepia	Upright REVERSE	1 Mint* & 1 Used*

## THE BACK PAGE

Worth waiting for! I didn't expect it would take quite so long to get this issue out but hopefully you'll agree it's a good result. It's great to have full colour and John Leah's editing input adds some nice touches.

Thanks to all those who contributed articles – it's the real heart of the society. And a special mention to Jeff Marks and Mark 'Robbo' Robinson who I can always depend on for help in getting the journal together.

Now, about the long-running saga of the Society website. It is almost finished and ready to be launched (has just been waiting my return from a few weeks overseas). It looks terrific, has a bunch of features that all members should be pleased with and represents an important development for the PPS. Please make sure we have your current email address.

**A final reminder to any member who has not yet paid their outstanding annual membership dues – time has run out and this really is your last chance. If there is a renewal from enclosed, it means our records list you as not having paid the annual subscription (not an especially large amount!). If you have paid – and our records are not accurate – please let me know (and apologies if that's the case). We would hate to lose anyone, especially now that we're on a roll. Do it NOW!!**

The contents, of course, depend on contributions from members. So, if you'd like to see more on PNG or GRI or Dutch New Guinea – well, please do send along something to share.

"What is it?". For anyone who might think, "oh, I don't have anything interesting in my collection", I'd respond that everyone has something – a favourite cover, an unusual address, an especially nice postmark, etc, etc. And if none of those, then how about an item in your collection that you can't quite place – odd perfs, uncertain watermark, date doesn't look right, questionable cancel, strange usage, want more information on a cover, dates of post offices, reference sources – the list is almost endless. Go on, send along an email with a scan of the item – to [papuanphilatelicsociety@gmail.com](mailto:papuanphilatelicsociety@gmail.com) or my email address below.

And while you're going through your material looking for that unusual postmark to send along, keep in mind that the next PPS Auction is coming up. Frank Wilson is again managing that and has put out a call for material submissions – before the end of Dec. This is for a March 2017 auction. Please forward material – with your nominated starting price – to Frank at: 57A Bourne Rd., Spalding Lincs. PE11 1JR, UK. And a suggestion – also provide a description of the items, don't assume everyone knows what it is (makes it easier to attract bids!).

Also make a note of the Melbourne Stamp Exhibition next year (Mar 28-Apr 2). Check out the details at [melbourne2017.com.au](http://melbourne2017.com.au). There will certainly be a PPS meeting at the event. And wouldn't it be great to see a couple of entries from members!

Regards,

*Richard*

[richard@muller.id.au](mailto:richard@muller.id.au)